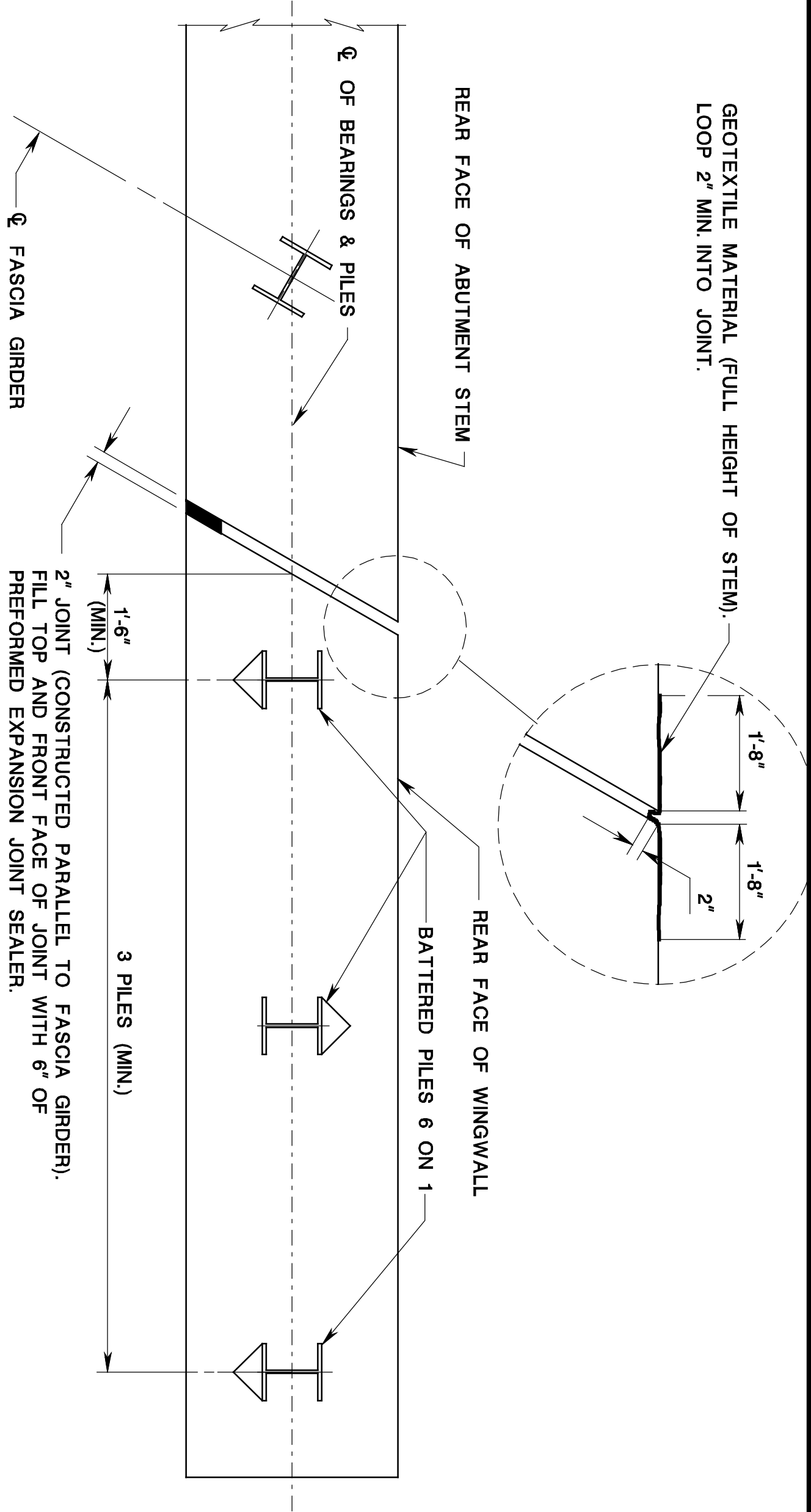


STATE	FEDERAL PROJECT NO.	SHEET	TOTAL SHEETS
N. J.			
STRUCTURE NO.			
STRUCTURE NAME			

NOTE TO DESIGNER:
DETAILING INCLUDED WITHIN THIS DRAWING MAY BE UTILIZED IN PREPARING CONTRACT PLANS. HOWEVER, IN CONFORMANCE WITH THE PROVISIONS OF SECTION 15 OF THIS MANUAL, ALTERNATIVE DETAILING MAY BE PROVIDED.

NOTES:

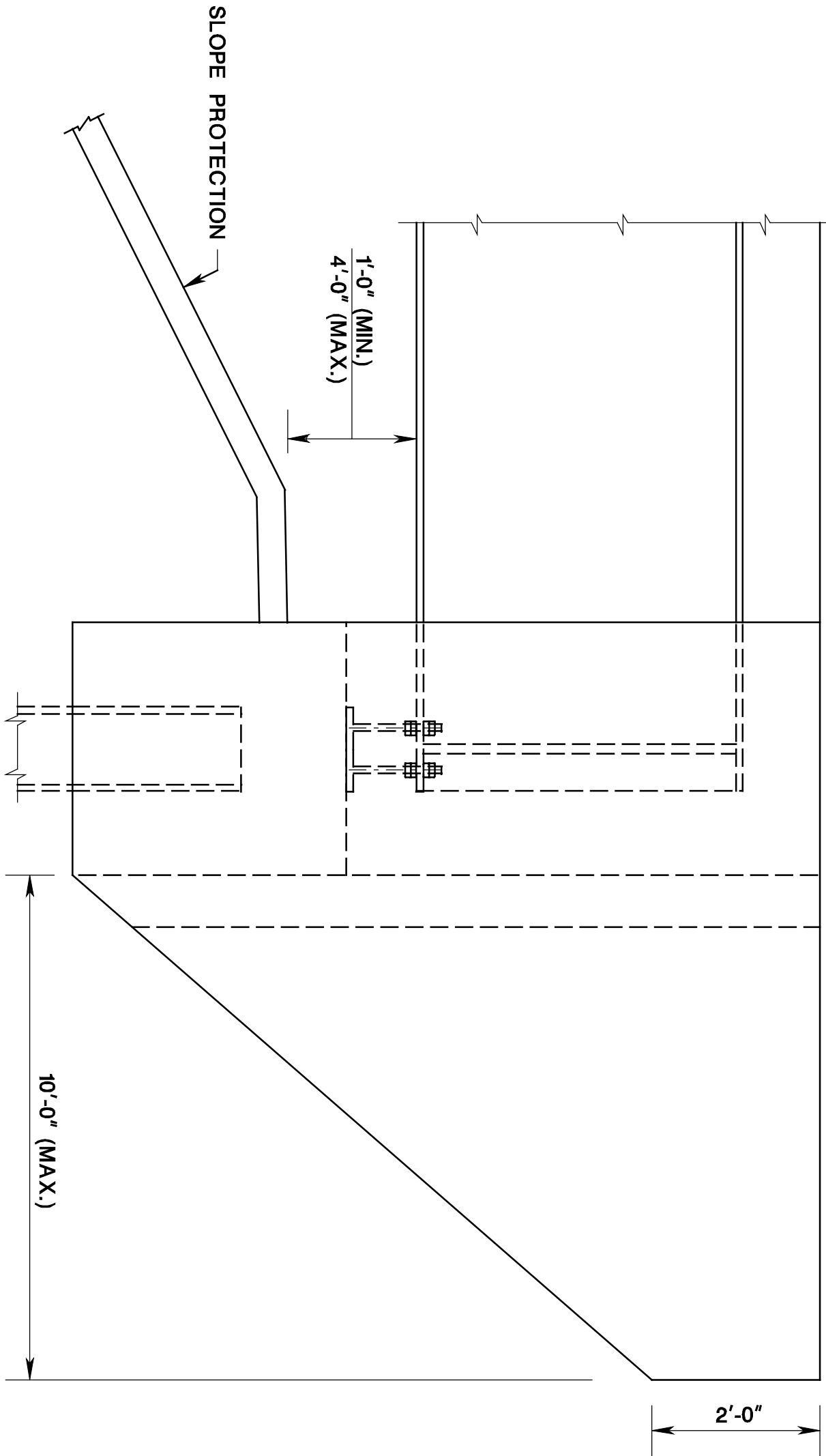
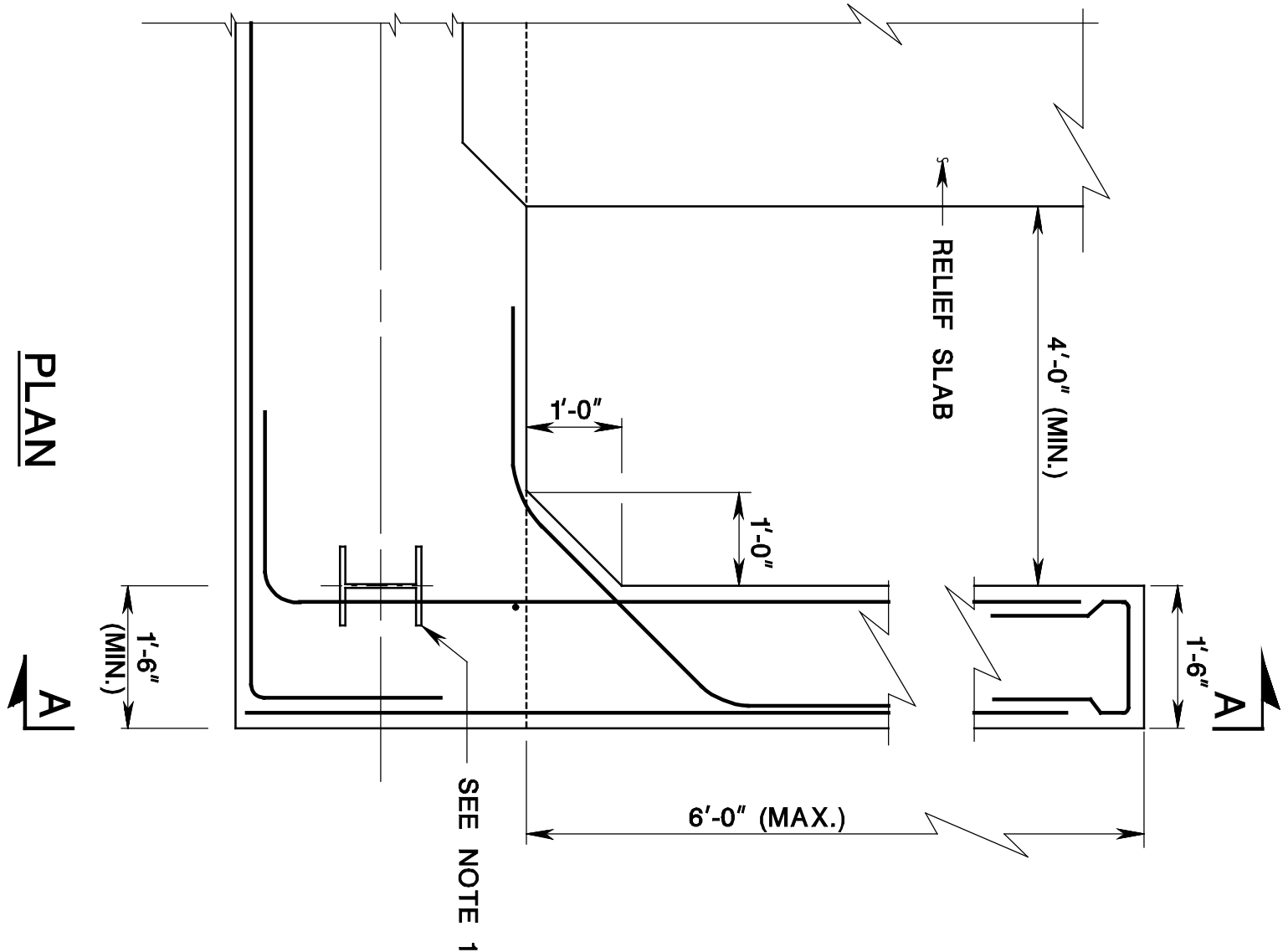
- FOR ABUTMENTS WITH INTEGRAL U-WINGWALLS, THE CORNER PILE SHOULD BE ORIENTED WITH THE STRONG AXIS PERPENDICULAR TO THE INTEGRAL U-WINGWALLS.
- THE 12'-0" MAXIMUM DIMENSION FOR THE PROJECTION OF INTEGRAL WINGWALLS IS MEASURED TO EITHER THE CENTERLINE OF THE FASCIA GIRDER FOR STEEL GIRDERS, OR THE EDGE OF THE FASCIA BEAM FOR PRESTRESSED BOX BEAM.
- WHEN SEPARATED WINGWALLS ARE NECESSARY, A SINGLE LINE OF PILES AS SHOWN IS PREFERABLE. IT IS ALSO ACCEPTABLE TO USE A CONVENTIONAL CANTILEVER WALL WITH A PILE FOOTING.



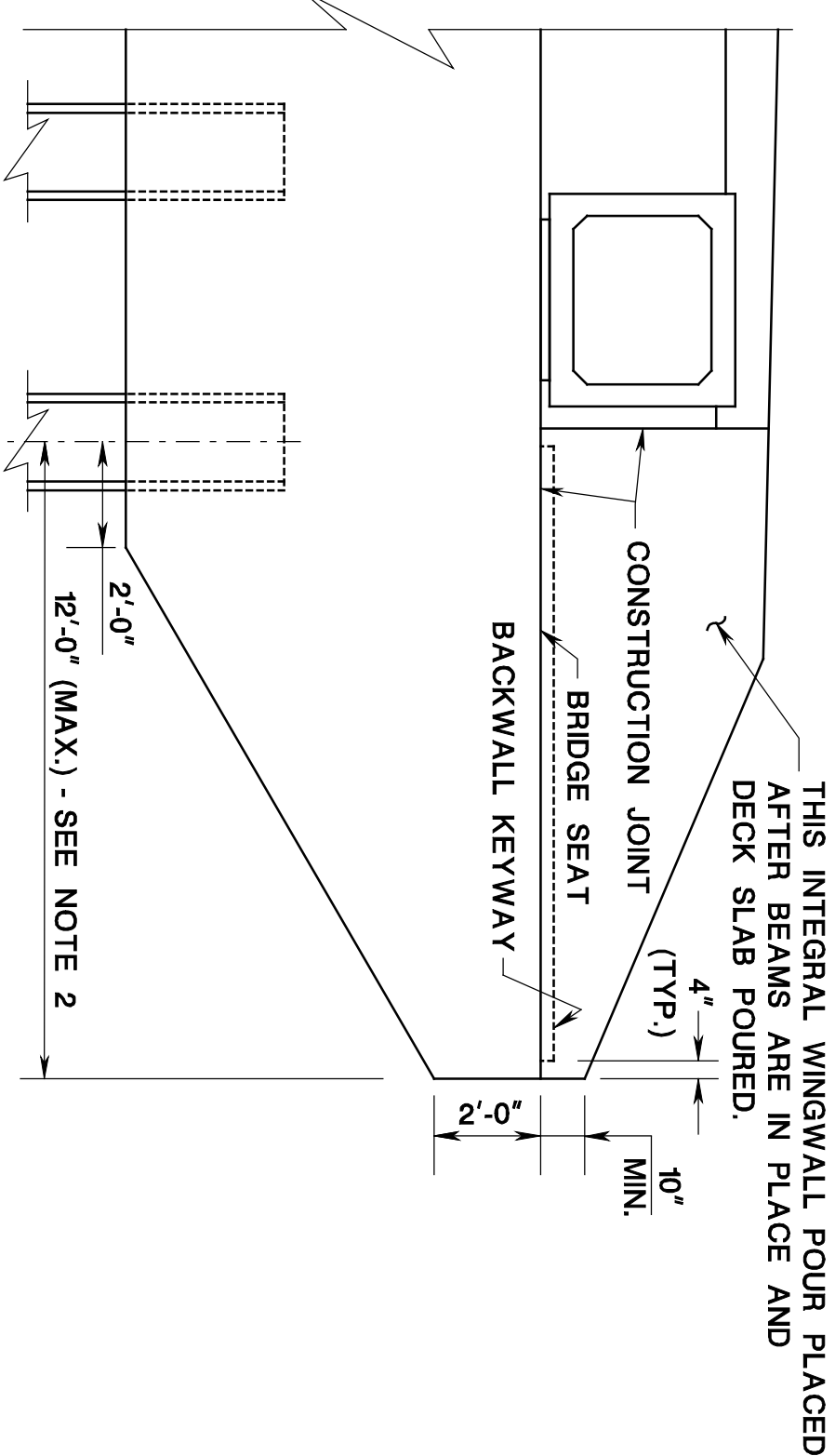
PLAN

TYPICAL LAYOUT FOR SEPARATED WINGWALLS

PLAN
U WALLS

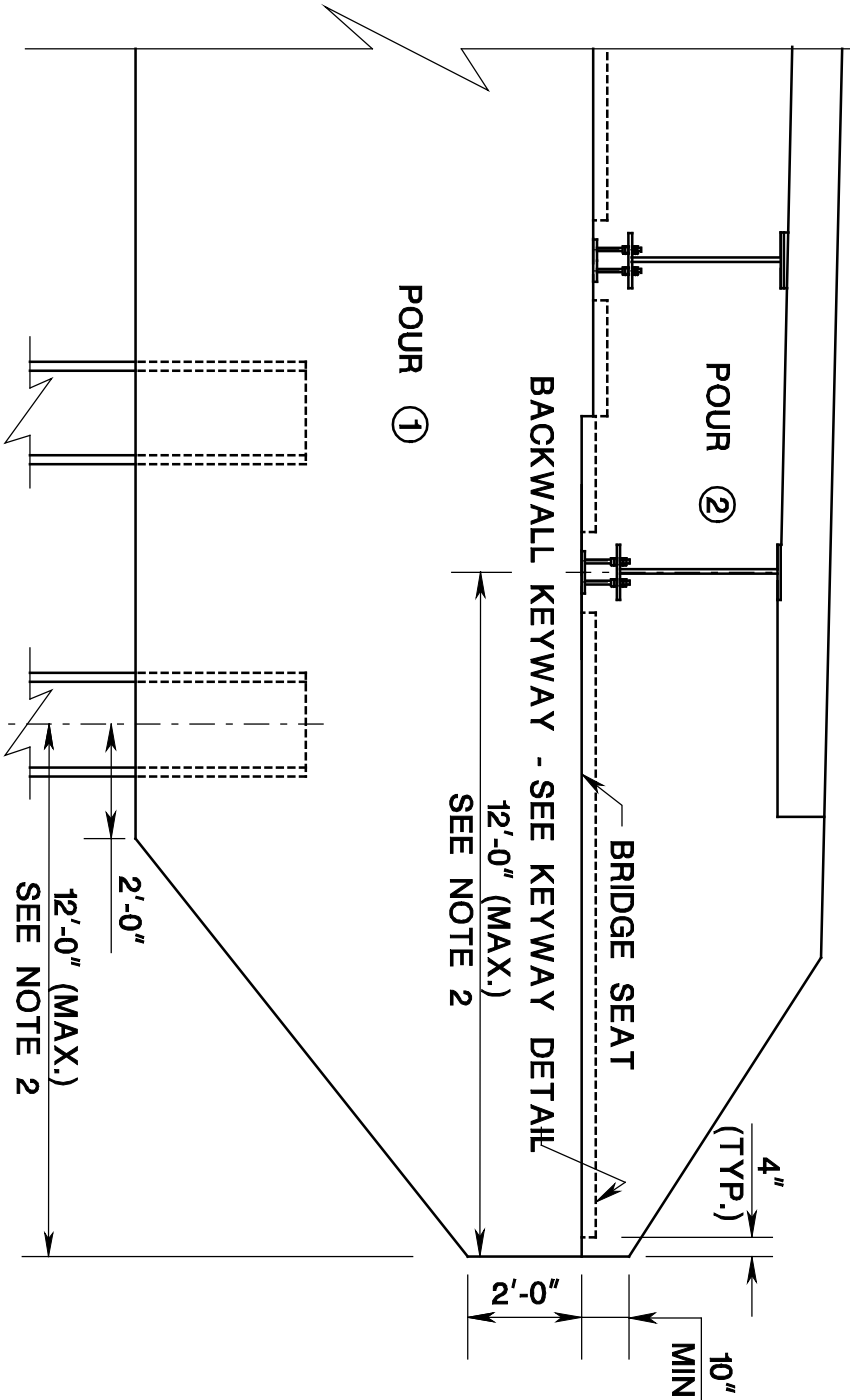


SECTION A-A



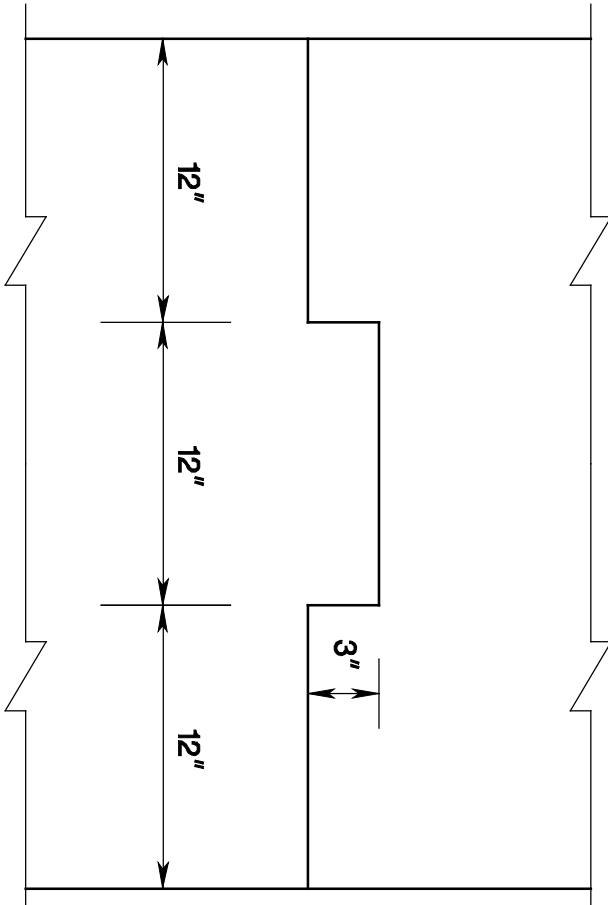
INTEGRAL WINGWALL ELEVATION

PRESTRESSED CONCRETE SUPERSTRUCTURE




INTEGRAL WINGWALL DETAIL FOR STEEL SUPERSTRUCTURE

KEYWAY DETAIL FOR STEEL SUPERSTRUCTURE



NOTE:
KEYWAY TO STOP 4" FROM SUPPORT PLATE OR CONSTRUCTION JOINT

		BDC04MB-01	
STANDARD DRAWING PLATE 2.5-4			
NEW JERSEY DEPARTMENT OF TRANSPORTATION BUREAU OF STRUCTURAL ENGINEERING			
WINGWALL DETAILS FOR INTEGRAL ABUTMENTS			
ROUTE:		SECTION:	
MUNICIPALITY		COUNTY	
SCALE: NONE		BRIDGE SHEET NO. OF	